



### Community Programs

#### The Harris Center for Conservation Education

supports undergraduate field research in environmental studies, geography, and related disciplines at Keene State College by training students in data collection methods and working with faculty to design capstone research experiences with applied conservation value. We also facilitate connections between KSC students and conservation professionals in our research and monitoring network, and offer public programs at KSC – with a focus on nature and conservation science – for the benefit of students, faculty, and the broader Keene community.

#### Questions?

**Brett Amy Thelen, Science Director**  
Harris Center for Conservation Education  
(603) 358-2065, [thelen@harriscenter.org](mailto:thelen@harriscenter.org)  
[harriscenter.org](http://harriscenter.org)

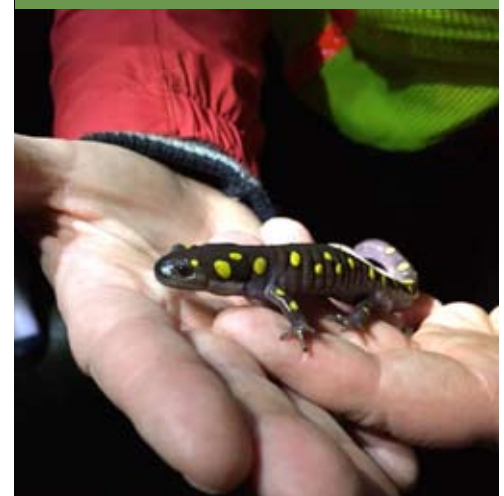
#### ▲ Vernal Pool Project Training Session

KSC students join community volunteers for a field training on identifying and documenting vernal pools. (photo: Brett Amy Thelen)

In the 2015-2016 academic year, the Harris Center partnered with KSC to offer three **film showings** and four **citizen science trainings** – all free and open to the public – with more than 400 attendees in all.

Dozens of students, staff, and faculty members also participated in our citizen science programs this year: the **Salamander Crossing Brigades**, in which volunteers identify, count, and move amphibians across roads throughout the Monadnock Region during the spring amphibian migration; the **Vernal Pool Project**, in which citizen scientists find and document the ephemeral waterbodies that serve as specialized breeding habitat for those migrating amphibians; and **Project Nighthawk**, in which volunteers monitor the Common Nighthawk in Keene, one of the last places in New Hampshire where this endangered bird still breeds. In the summer of 2016, a KSC student intern was particularly instrumental in locating and monitoring the first confirmed nighthawk nest in Keene since 2012.

#### Citizen Science



▲ **Spotted Salamander** (photo: Sarah Wilson)







◀ **Searching for Signs of Hemlock Woolly Adelgid**  
Harris Center Director **Jeremy Wilson** trains the 2016 team of KSC conservation interns in forest community inventory techniques. (photo: Brett Amy Thelen)



▲ **Checking on the Chestnuts**  
In 2015, the Harris Center planted 10 blight-resistant American Chestnut trees on our conserved lands. In 2016, the KSC conservation interns checked the plantings — recording information on their location, height, and condition — as part of a status update for the American Chestnut Foundation. (photo: Brett Amy Thelen)

## Conservation Internships

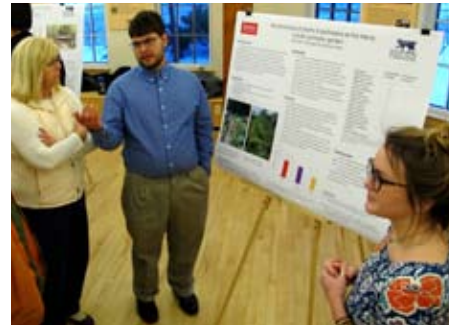
In the fourth year of an innovative partnership with the KSC Department of Environmental Studies (ENST), four outstanding ENST students participated in a seven-week summer **conservation internship program** with the Harris Center in 2016. Under the guidance of ENST faculty and Harris Center staff, the students gained specialized training and firsthand experience with many

facets of the Harris Center's diverse conservation and education work. Together, the internship team documented vernal pools, inventoried forest communities, surveyed and removed hundreds of invasive plants, mapped and measured chestnut seedlings, monitored conservation easements, assisted with educational events, and conducted a wildlife road mortality study.

## Research on Harris Center Lands



◀ **Surveying Road-Stream Crossings in the SuperSanctuary**  
Joseph Martino (pictured) and Hunter Guiddess collect data at a road-stream crossing abutting Harris Center lands in Hancock. (photo: Hunter Guiddess)



◀ **Conservation Research Poster Session at the Harris Center**  
Brenden Campbell and Vic Drake discuss their capstone research with community members during a poster session at the Harris Center. (photo: Brett Amy Thelen)

Under the direction of **Dr. Denise Burchsted**, a team of KSC students is maintaining a network of water quality sensors and conducting habitat research in three streams on Harris Center conserved lands.

**Dr. Renate Gebauer's** ENST students also focused on Harris Center lands for their two-semester **capstone research experience**

in 2015 and 2016, conducting pollinator and wildlife surveys, assessing road-stream crossings for fish passage and flooding potential, investigating the effects of road salt on aquatic communities, and surveying recreational use of the Harris Center's growing trail network. They shared their findings in poster sessions at both KSC and the Harris Center at the end of the fall semester.

## Continuing Education

The Harris Center's education staff also partnered with KSC's *Kids on Campus* and *Cheshire Academy for Lifelong Learning* programs to offer learning opportunities for curious naturalists age 3 to 93 in 2016.

◀ **A young naturalist explores the banks of the Ashuelot River during a Kids on Campus summer camp program, cosponsored by the Harris Center and KSC.** (photo: Brittiny Walker)



In recognition of their vital contributions to the Harris Center's conservation research program, the Harris Center awarded the **Laurie Bryan Partnership Award** to the KSC Department of Environmental Studies in October 2016.

◀ **Dr. Renate Gebauer accepts the Laurie Bryan Partnership Award on behalf of KSC.** (photo: Meade Cadot)

## Special Recognitions